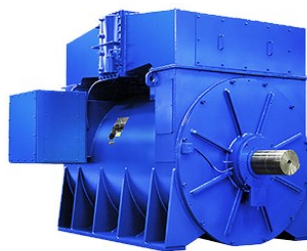
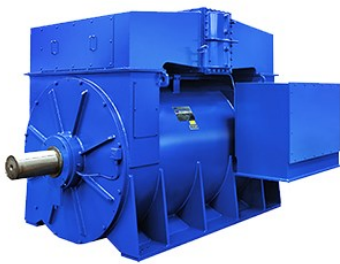
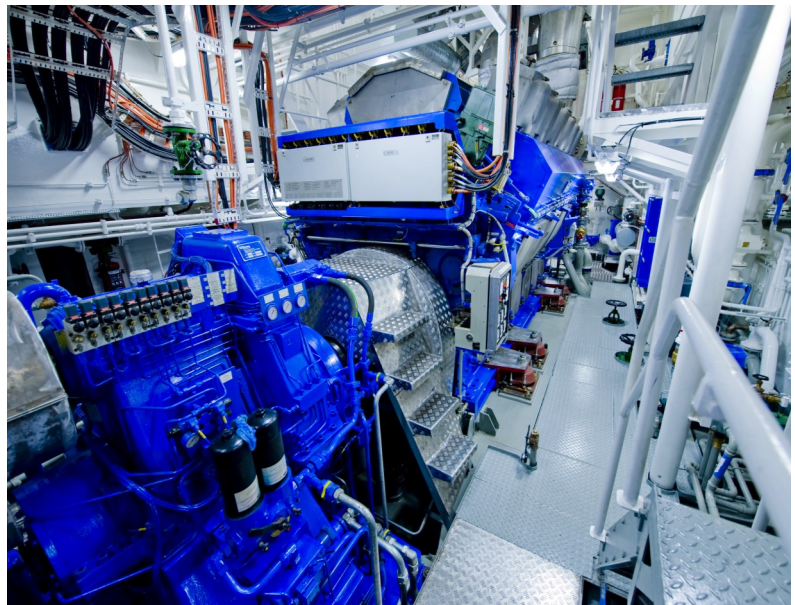


Westcon Power & Automation delivers a full range of reliable and high quality electrical machines to marine, offshore and industrial applications. Combining the WPA's specifications with Marelli Motori's technology, the electric machines will ensure efficient operations.

All our products can be customized based on your required application.

Marine Applications

- Propulsion
- Thrusters
- FI-FI system
- Auxilliaries and Dredge Pumps
- Main and auxilliary generators
- Shaft generators
- PTO-PTI system
- Hybrid Machines



Contact us:

For sales:

Frode Skaar

Director, Sales & Business Development

frode.skaar@westcon.no

Tel: +47 474 68 000

Mob: +47 909 81 017

Westcon Power & Automation offers complete electrical installations for new builds, re-builds, classification, as well as a wide range of other services. Our highly qualified staff and extensive network of partners enable us to provide our customers with customized solutions.

Our Products & Services

Our comprehensive portfolio of state of the art products for the maritime industry ranges from complete power and automation systems to stand-alone products and concepts for machine safety.

WPA provides a full range of services within oil and gas, marine and industrial sectors. We are the preferred supplier of electro on all yard stay of Westcon Yard.

Our Technology

Significant R&D over the years has helped us to make complex technology easier to achieve. The changing needs of customers present new challenges and techniques that allowed us to be flexible in adapting into the evolving market and continue to develop ideas not only for clientele but also for our continuous growth.

